

PROMENADES THIMENS



MONTREAL, 1320 MARCEL-LAURIN & 1896-18948 THIMENS BLVD

Leasing Availabilities

Suite 200: 983 sq. ft.

Suite 210: 1,355 sq. ft.

Space can be subdivided

Property details

Ground floor:	Retail
Second floor:	Office space
Year built:	1985
Total leasable area:	40,261 sq. ft.
Number of storeys:	2 floors
Ceiling height:	8'7"
Asking price:	Call leasing agent for special promotion

Office spaces: Starting at \$18.00 gross per sq. ft.

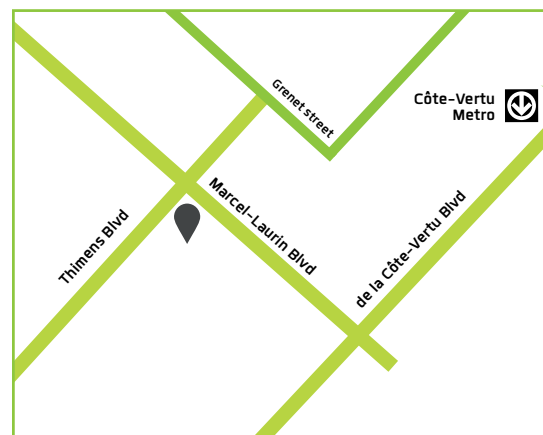
Tax & Operating expenses: Included

Hydro: Included

Parking lot: 168 stalls

Highlights & Location

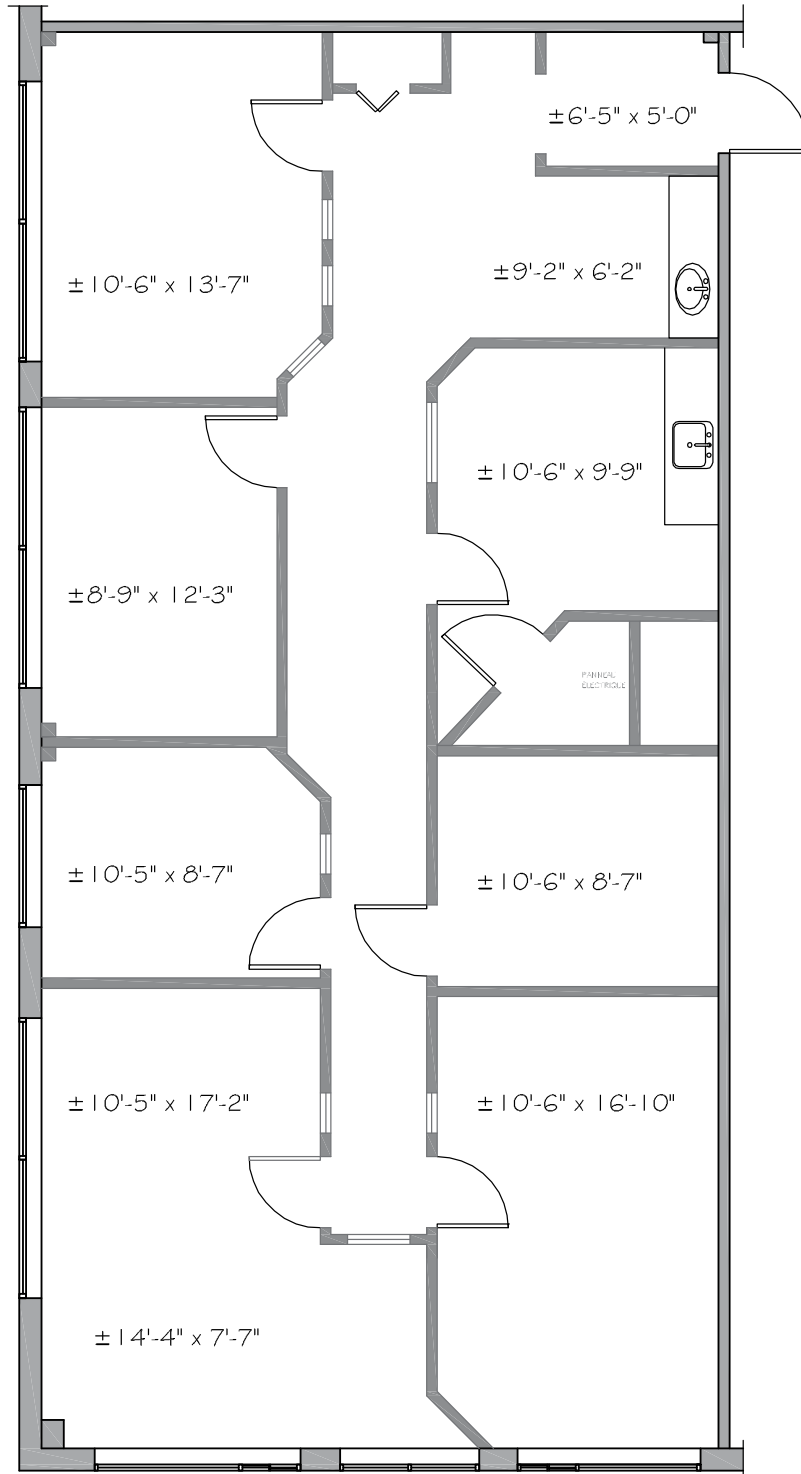
- Important tenant on ground floor: Grillades Coréennes, restaurant Ben & Florentine, Le Petit Gym and Continental Tires
- Excellent location, strategically located on the corner of Marcel-Laurin Boulevard and Thimens Boulevard
- Adjacent to Pfizer and Bombardier offices
- Just one block away from Côte-Vertu Boulevard
- Accessible by Montréal public transit
- A few minutes walk from the Côte-Vertu métro station



Jamie Lee Forget
Leasing Director
Cell: 514-264-8338
Jforget@cogir.net

cogir.net

PROMENADES THIMENS



Suite 210

Leasable area: 1,355 sq. ft.



Jamie Lee Forget
Leasing Director
Cell: 514-264-8338
Jforget@cogir.net

cogir.net