

WESTMOUNT SQUARE



MONTREAL, WESTMOUNT SQUARE

Property Details

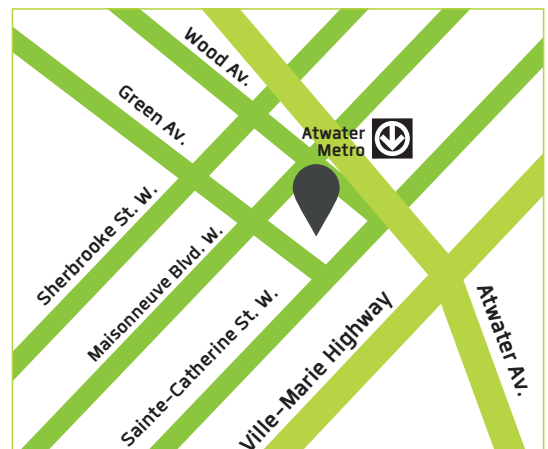
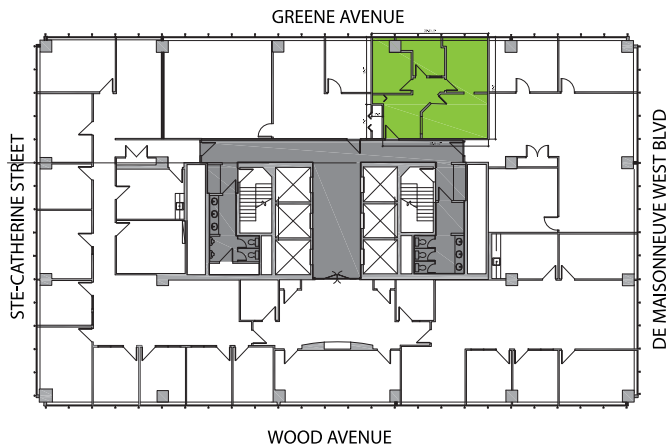
Suite 1130	Tower 1
Estimated real estate taxes & Operating expenses (2015) :	\$20.52 per sq. ft.
Net rental rate:	Contact leasing agent

Highlights

- Generous Turnkey Renovation Package Offered
- Prestigious Montreal Landmark Building
- Building Designed by Renowned Architect: Ludwig Mies van der Rohe
- Floor-to-Ceiling Office Windows with Panoramic Views
- Underground Secured Heated Parking
- Mall Features: Full Food Court, Grocery Store, Salons, Dry Cleaning Services, Medical Clinic & Numerous Boutiques
- 24/7 On-Site Security

Location

- Prime Location in Westmount, 5 Minutes From Downtown Montreal
- Easy Access to Highways 720 and 15
- Served by Several Main Bus Lines
- Very Close Proximity to Most Major Banks
- Close to Bixi Stations and Bike Paths
- Within Walking Distance to Over 30 Restaurants
- Direct Access to Atwater Metro Station





WESTMOUNT SQUARE

Suite 1130

OFFICE SPACE FOR RENT

Leasable Area: 648 sq. ft.

- Amazing Space Ready for Immediate Occupancy
- Four Closed Offices with Front Desk Area
- Large Hardwood Doors to Every Office
- Office Located on South-West Side

