

JARDINS ROSEMÈRE

ROSEMÈRE



JARDINS ROSEMÈRE 395-401, DE LA GRANDE-CÔTE Road

Leasing Availabilities

Unité 401B:	707 sq. ft.	Office
Suite 395:	6,218 sq. ft.	Office or retail

Property Details

Total leasable area:	22,469 sq. ft.
Parking Spaces:	100

Highlights

- 6,218 sq. ft. available office or retail space
- 500 to 6,218 sq. ft. of office space available
- Beautiful community property featuring country-style architecture
- Strategically located on Grande-Côte Road in Rosemère
- Competitive rental rates
- Pylon signage available
- Ample free parking lot



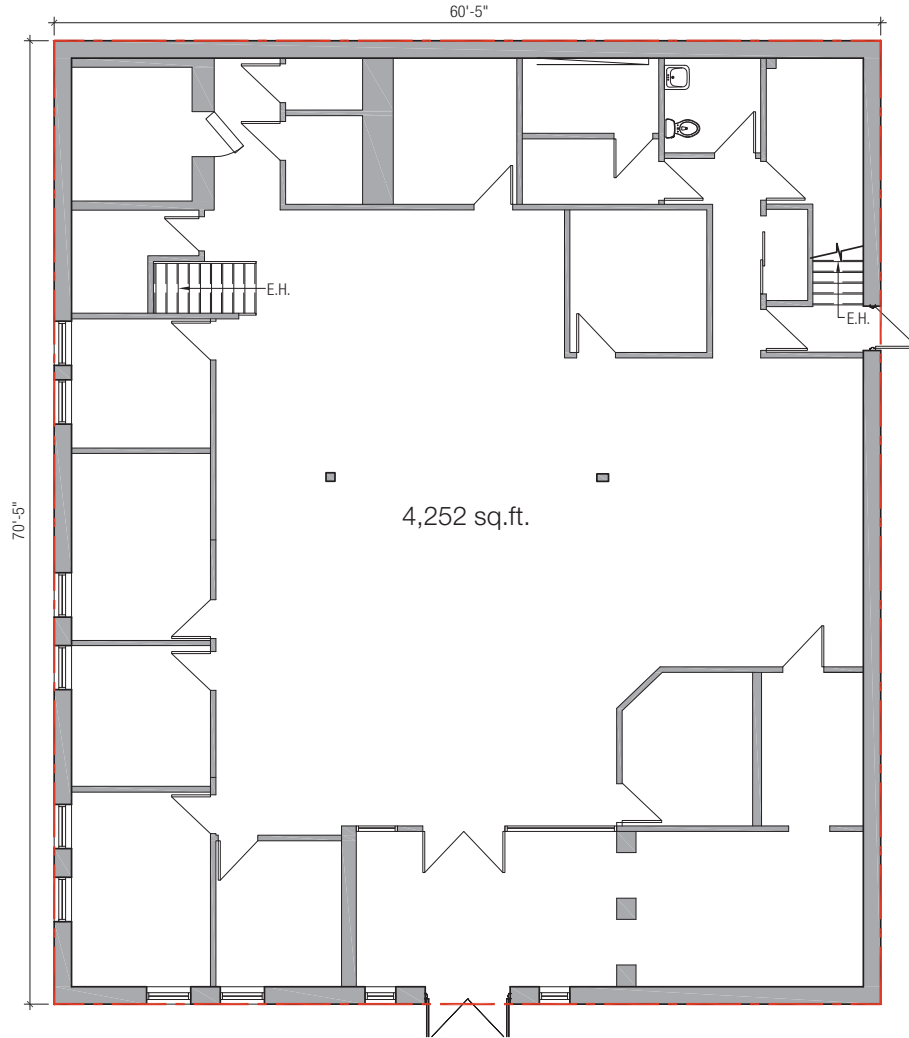
Gisèle Durepos
Leasing Director
Commercial Division
Real Estate Broker
📞 514 774-7179
✉️ gdurepos@cogir.net

Joseph Télió
Vice-President, Leasing
Commercial Division
Real Estate Broker
📞 450 766-2454
✉️ jtelió@cogir.net

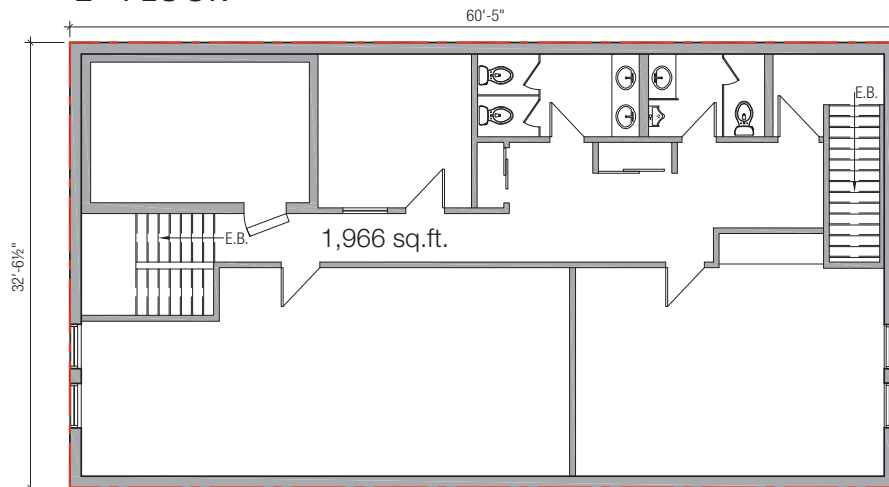
Louis Parent
Leasing Director
Commercial Division
Commercial Real Estate Broker
📞 514 291-2750
✉️ lparent@cogir.net

AVAILABLE OFFICE OR RETAIL SPACE FOR LEASE: 6,218 sq. ft.
| 395, GRANDE-CÔTE ROAD

GROUND FLOOR

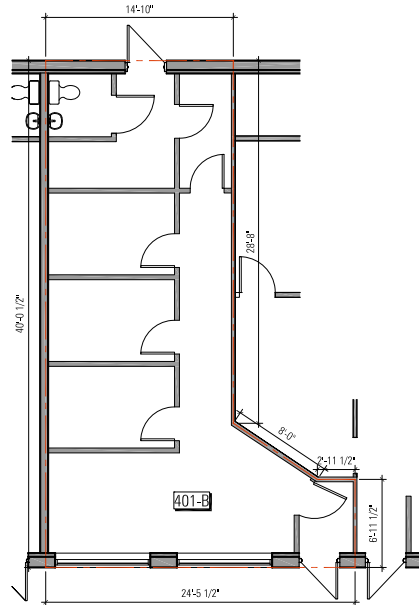


2nd FLOOR

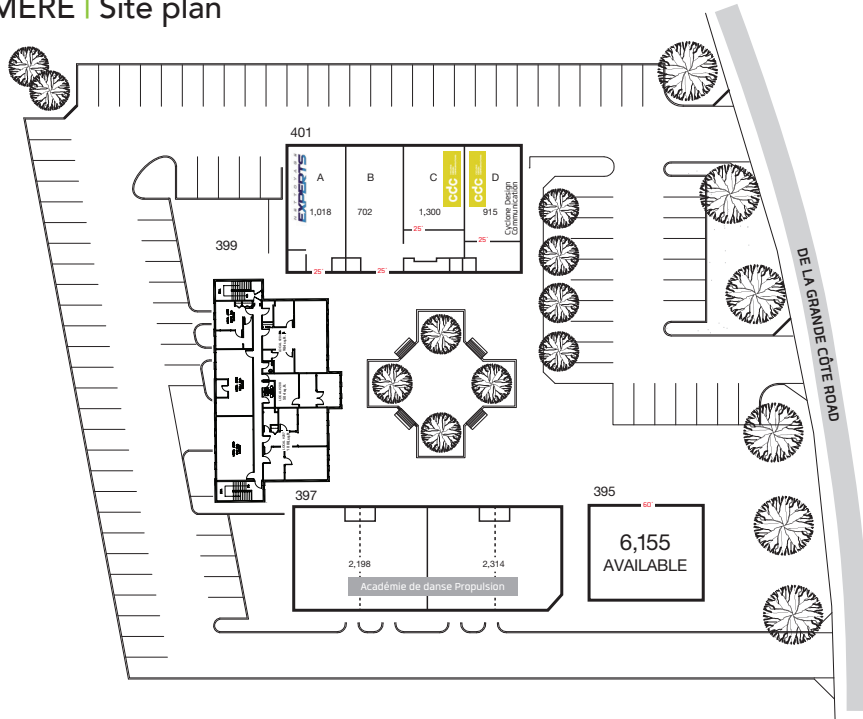


Office space - 4th floor

Suite 404B: 707 sq. ft.



JARDINS ROSEMÈRE | Site plan



Gisèle Durepos
 Leasing Director
 Commercial Division
 Real Estate Broker
 ☎ 514 774-7179
 ✉ gdurepos@cogir.net

Joseph Télió
 Vice-President, Leasing
 Commercial Division
 Real Estate Broker
 ☎ 450 766-2454
 ✉ jtelió@cogir.net

Louis Parent
 Leasing Director
 Commercial Division
 Commercial Real Estate Broker
 ☎ 514 291-2750
 ✉ lparent@cogir.net